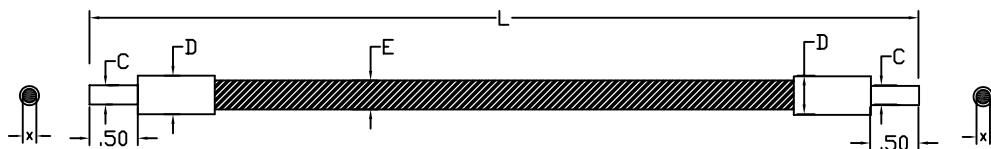
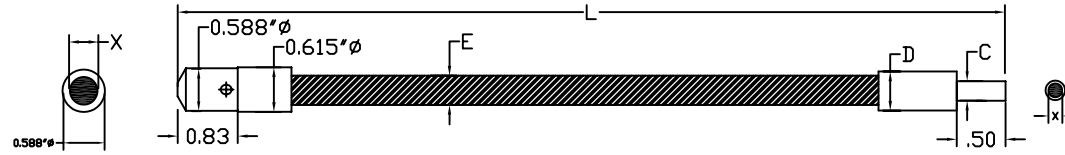


B TYPE LIGHT GUIDES (FIGURE 1)



STRAIGHT SINGLE FIBER OPTIC LIGHT GUIDES									Required light source adapter	
PART NUMBER	MODEL	BUNDLE	MINOR TIP OD	MAJ TIP OD	SHEATH OD	LENGTH	SHEATHING MTL	SEE FIGURE	1.0" (25mm) "A" Input	0.590", Mi-150, "B" Input
		"X"	"C"	"D"	"E"	"L"				
002112003024	B624	0.062	0.186	0.205	0.19	24.0	PVC MONOCOIL	1	SX-5 ADAPTER	SX-5B ADAPTER
002112003048	B648	0.062	0.186	0.205	0.19	48.0	PVC MONOCOIL	1	SX-5 ADAPTER	SX-5B ADAPTER
002112003072	B672	0.062	0.186	0.205	0.19	72.0	PVC MONOCOIL	1	SX-5 ADAPTER	SX-5B ADAPTER
002114006036	BX636	0.062	0.186	-	0.20	36.0	SST METAL HOSE	1	SX-5 ADAPTER	SX-5B ADAPTER
002114006048	BX648	0.062	0.186	-	0.20	48.0	SST METAL HOSE	1	SX-5 ADAPTER	SX-5B ADAPTER
002114006072	BX672	0.062	0.186	-	0.20	72.0	SST METAL HOSE	1	SX-5 ADAPTER	SX-5B ADAPTER
002112005036	B836	0.125	0.186	0.250	0.23	36.0	PVC MONOCOIL	1	SX-5 ADAPTER	SX-5B ADAPTER
002112005048	B848	0.125	0.186	0.250	0.23	48.0	PVC MONOCOIL	1	SX-5 ADAPTER	SX-5B ADAPTER
002112005072	B872	0.125	0.186	0.250	0.23	72.0	PVC MONOCOIL	1	SX-5 ADAPTER	SX-5B ADAPTER
002114008036	BX836	0.125	0.186	-	0.24	36.0	SST METAL HOSE	1	SX-5 ADAPTER	SX-5B ADAPTER
002114008048	BX848	0.125	0.186	-	0.24	48.0	SST METAL HOSE	1	SX-5 ADAPTER	SX-5B ADAPTER
002114008072	BX872	0.125	0.186	-	0.24	72.0	SST METAL HOSE	1	SX-5 ADAPTER	SX-5B ADAPTER
002112007036	B436	0.250	0.310	0.422	0.40	36.0	PVC MONOCOIL	1	SX-6 ADAPTER	DIRECT FIT, NO ADAPTER REQ.
002112007048	B448	0.250	0.310	0.422	0.40	48.0	PVC MONOCOIL	1	SX-6 ADAPTER	SX-6B ADAPTER
002112007060	B460	0.250	0.310	0.422	0.40	60.0	PVC MONOCOIL	1	SX-6 ADAPTER	SX-6B ADAPTER
002112007072	B472	0.250	0.310	0.422	0.40	72.0	PVC MONOCOIL	1	SX-6 ADAPTER	SX-6B ADAPTER
002112007096	B496	0.250	0.310	0.422	0.40	96.0	PVC MONOCOIL	1	SX-6 ADAPTER	SX-6B ADAPTER
002112007120	B4120	0.250	0.310	0.422	0.40	120.0	PVC MONOCOIL	1	SX-6 ADAPTER	SX-6B ADAPTER
002114004036	BX436	0.250	0.310	-	0.41	36.0	SST METAL HOSE	1	SX-6 ADAPTER	SX-6B ADAPTER
002114004048	BX448	0.250	0.310	-	0.41	48.0	SST METAL HOSE	1	SX-6 ADAPTER	SX-6B ADAPTER
002114004072	BX472	0.250	0.310	-	0.41	72.0	SST METAL HOSE	1	SX-6 ADAPTER	SX-6B ADAPTER
700014930036	B3736	0.375	0.562	0.750	0.66	36.0	PVC METAL HOSE	1	SX-10 ADAPTER	NOT APPLICABLE
700014930048	B3748	0.375	0.562	0.750	0.66	48.0	PVC METAL HOSE	1	SX-10 ADAPTER	NOT APPLICABLE
700014920036	B236	0.500	0.562	0.875	0.75	36.0	PVC METAL HOSE	1	SX-10 ADAPTER	NOT APPLICABLE
700014920048	B248	0.500	0.562	0.875	0.75	48.0	PVC METAL HOSE	1	SX-10 ADAPTER	NOT APPLICABLE
700014920072	B272	0.500	0.562	0.875	0.75	72.0	PVC METAL HOSE	1	SX-10 ADAPTER	NOT APPLICABLE

B/M TYPE LIGHT GUIDE (FIGURE 3)



Direct Fit For MI-150, 0.59" Ø, "B" Nose Input

STRAIGHT SINGLE FIBER OPTIC LIGHT GUIDES									Required light source adapter	
PART NUMBER	MODEL	BUNDLE	MINOR TIP OD	MAJ TIP OD	SHEATH OD	LENGTH	SHEATHING MTL	SEE FIGURE	1.0" (25mm) "A" Input	0.590", Mi-150, "B" Input
		"X"	"C"	"D"	"E"	"L"				
700009680024	B624M	0.062	0.186	0.205	0.19	24.0	PVC MONOCOIL	3	SX-13 ADAPTER	DIRECT FIT, NO ADAPTER REQ.
002112520036	B836M	0.125	0.186	0.250	0.23	36.0	PVC MONOCOIL	3	SX-13 ADAPTER	DIRECT FIT, NO ADAPTER REQ.
002112520048	B848M	0.125	0.186	0.250	0.23	48.0	PVC MONOCOIL	3	SX-13 ADAPTER	DIRECT FIT, NO ADAPTER REQ.
002112520072	B872M	0.125	0.186	0.250	0.23	72.0	PVC MONOCOIL	3	SX-13 ADAPTER	DIRECT FIT, NO ADAPTER REQ.
002114430048	BX848M	0.125	0.186	-	0.24	48.0	SST METAL HOSE	3	SX-13 ADAPTER	DIRECT FIT, NO ADAPTER REQ.
002112424036	B436M	0.250	0.310	0.422	0.40	36.0	PVC MONOCOIL	3	SX-13 ADAPTER	DIRECT FIT, NO ADAPTER REQ.
002112424048	B448M	0.250	0.310	0.422	0.40	48.0	PVC MONOCOIL	3	SX-13 ADAPTER	DIRECT FIT, NO ADAPTER REQ.
002112424060	B460M	0.250	0.310	0.422	0.40	60.0	PVC MONOCOIL	3	SX-13 ADAPTER	DIRECT FIT, NO ADAPTER REQ.
002112424072	B472M	0.250	0.310	0.422	0.40	72.0	PVC MONOCOIL	3	SX-13 ADAPTER	DIRECT FIT, NO ADAPTER REQ.
002112424096	B496M	0.250	0.310	0.422	0.40	96.0	PVC MONOCOIL	3	SX-13 ADAPTER	DIRECT FIT, NO ADAPTER REQ.
002112424120	B4120M	0.250	0.310	0.422	0.40	120.0	PVC MONOCOIL	3	SX-13 ADAPTER	DIRECT FIT, NO ADAPTER REQ.
002114404036	BX436M	0.250	0.310	-	0.41	36.0	SST METAL HOSE	3	SX-13 ADAPTER	DIRECT FIT, NO ADAPTER REQ.
002114404048	BX448M	0.250	0.310	-	0.41	48.0	SST METAL HOSE	3	SX-13 ADAPTER	DIRECT FIT, NO ADAPTER REQ.
002114404072	BX472M	0.250	0.310	-	0.41	72.0	SST METAL HOSE	3	SX-13 ADAPTER	DIRECT FIT, NO ADAPTER REQ.