

# Wireless Solutions — Cellular/PCS/UMTS Tunable Bandreject Filters

## ◆ Features:

- Super Narrow 3 dB BW
- Digitally Controlled
- Available Remote Interfaces Include GPIB (IEEE-488, RS-232, RS-422, and BCD)
- Drive Voltages Include 12 VDC, 24 VDC, and 110 VAC
- Manually Controlled Versions also Available



## ◆ Applications:

- Designed specifically for automated testing required in: Cellular, PCS and UMTS applications

## ◆ Specifications:

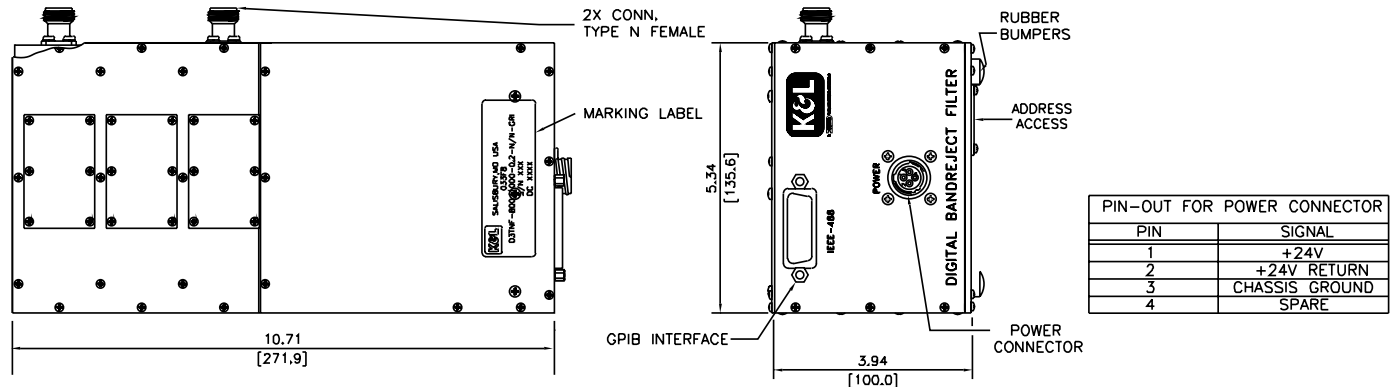
K&L Model	Frequency Range (MHz)	Type	3 dB BW Range (MHz) (Relative)	Typ. Notch Depth (Relative)	Length Inch/mm	Width Inch/mm	Height Inch/mm
D3TNF-800/1000-0.2-N/N-GRI	800-1000	3 Section	1.6-2.6	40 dB	10.71/272	5.34/136	3.94/100
D5TNF-1700/2000-0.2-N/N-GRI	1700-2000	5 Section	3-3.6	30 dB	11.64/296	5.31/135	3.94/100
D5TNF-2080/2200-0.5-N/N-GRI	2080-2200	5 Section	9.5-11	50 dB	12.03/305.6	3.22/81.9	3.31/84.2

Passband VSWR	Insertion Loss	Impedance	Operating Power	Remote Interface	RF Connector
1.5:1	< 0.5 dB	50 Ohms	24 VDC Standard, 12 VDC/110 VAC Optional	GPIB Standard, RS-232/RS-422/BDC Optional	Type N Standard, SMA/TNC/BNC Optional

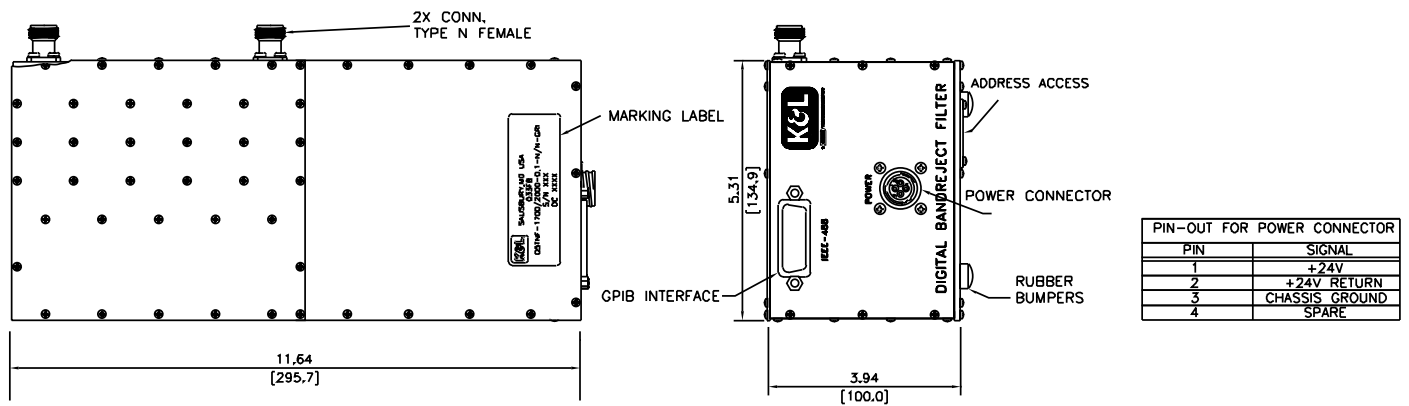
Custom configurations and ruggedized versions also available. Contact the factory for custom requirements.

# Wireless Solutions — Cellular/PCS/UMTS Tunable Bandreject Filters

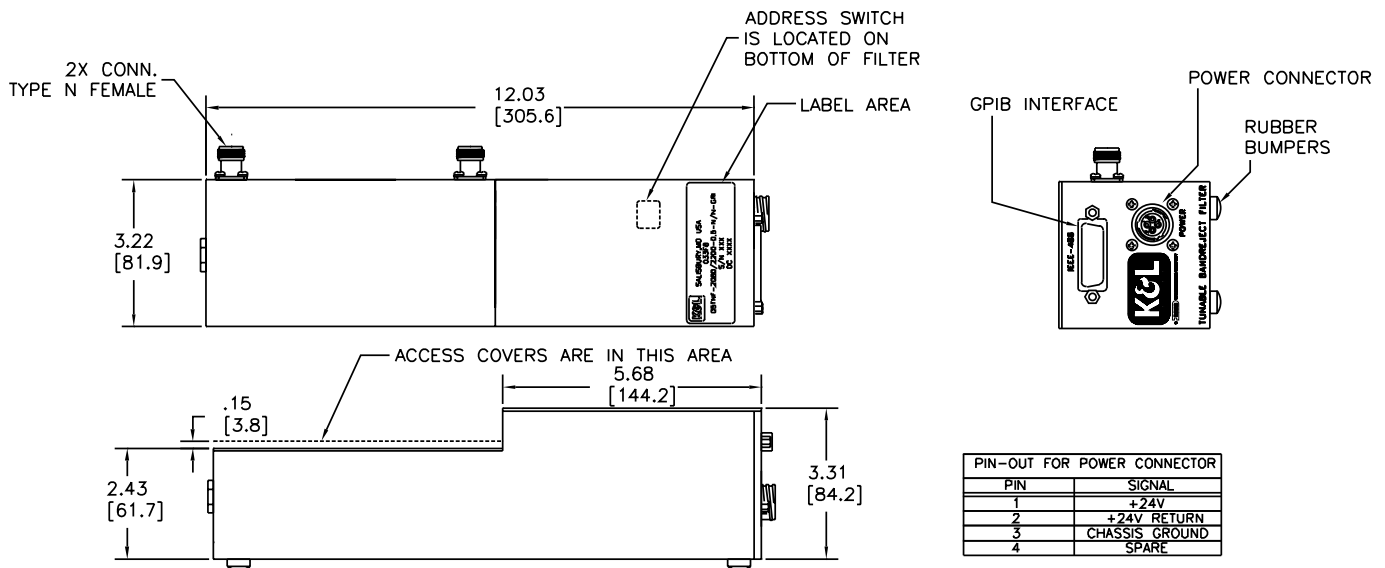
## ◆ D3TNF-800/1000-0.2-N/N-GRI:



## ◆ D5TNF-1700/2000-0.1-N/N-GRI:



## ◆ D5TNF-2080/2200-0.5-N/N-GRI:



Telemeter Electronic

Deutschland  
Telemeter Electronic GmbH  
Joseph-Gänsler-Straße 10  
D-86609 Donauwörth  
Telefon (09 06) 7 06 93-0  
Telefax (09 06) 7 06 93-50  
E-Mail info@telemeter.de  
www.telemeter.info

Schweiz  
Telemeter Electronic GmbH  
Romanshornstrasse 117  
CH-8280 Kreuzlingen  
Telefon (071) 699 20 20  
Telefax (071) 699 20 24  
E-Mail info@telemeter.ch  
www.telemeter.info

