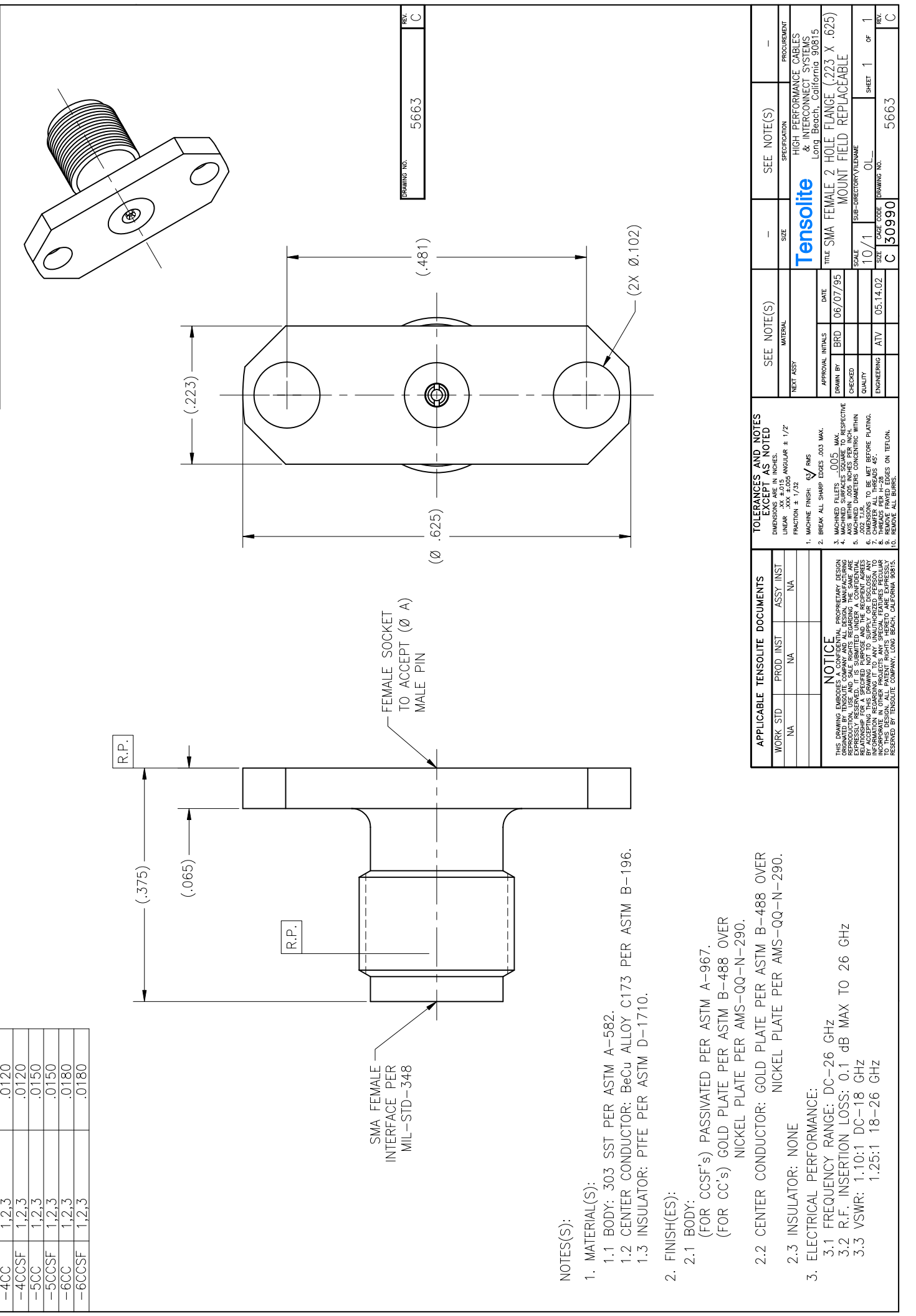


P/N	APPLICABLE NOTE(S)	TOLERANCE (Ø A)	REVISIONS	
			ZONE	DESCRIPTION
-2CC	1,2,3	.0200	A	ECO 10647
-2CCSF	1,2,3	.0200	B	ECO 11323
-3CC	1,2,3	.0100	C	ECO 14523
-3CCSF	1,2,3	.0100		
-4CC	1,2,3	.0120		
-4CCSF	1,2,3	.0120		
-5CC	1,2,3	.0150		
-5CCSF	1,2,3	.0150		
-6CC	1,2,3	.0180		
-6CCSF	1,2,3	.0180		



ZONE	REV	DESCRIPTION	DATE	BY
-	A	ECO 10647	09.07.99	DKN
D4	B	ECO 11323	03.28.00	DKN
-	C	ECO 14523	05.13.02	ATV

WORK STD	PROD INST	ASST INST	SEE NOTE(S)	SEE NOTE(S)
NA	NA	NA		

APPROVAL INITIALS	DATE	PROCUREMENT
BRD	06/07/95	HIGH PERFORMANCE CABLES & INTERCONNECT SYSTEMS
CHECKED		Long Beach, California 90815
QUALITY		
ENGINEERING	ATV	

TITLE	SCALE	SHEET	OF
TITLE SMA FEMALE 2 HOLE FLANGE (223 X .625)	10/1	1	1

SIZE	DATE	REV
C	05.14.02	5663

APPLICABLE TENSOLITE DOCUMENTS	TOLERANCES AND NOTES EXCEPT AS NOTED						
<table border="1"> <thead> <tr> <th>WORK STD</th> <th>PROD INST</th> <th>ASST INST</th> </tr> </thead> <tbody> <tr> <td>NA</td> <td>NA</td> <td>NA</td> </tr> </tbody> </table>	WORK STD	PROD INST	ASST INST	NA	NA	NA	DIMENSIONS ARE IN INCHES LINEAR .XX ±.015 ANGULAR ± 1/2 FRACTION ± 1/32 1. MACHINE FINISH ✓ R/S 2. BREAK ALL SHARP EDGES .003 MAX. 3. MACHINED FILLETS .005 MAX. 4. MACHINED SURFACES SQUARE TO RESPECTIVE AXIS WITHIN .005 INCHES PER INCH. 5. .002 TYP. UNLESS OTHERWISE SPECIFIED. 6. DIMENSIONS TO CENTER UNLESS OTHERWISE SPECIFIED. 7. DIMENSIONS TO BEAMS BEFORE PLATING. 8. THREADS PER H-28. 9. REMOVE ALL BURRS. 10. REMOVE ALL BURRS.
WORK STD	PROD INST	ASST INST					
NA	NA	NA					

NOTICE: THIS DRAWING IS THE PROPERTY OF TENSOLITE, INC. REPRODUCTION, USE AND SALE RIGHTS REGARDING THE SAME ARE RESERVED BY TENSOLITE COMPANY AND ALL DESIGN MANUFACTURING RELATIONSHIP FOR A SPECIFIED PURPOSE AND THE RECORD ARCHIVES INFORMATION. REPRODUCTION TO ANY UNAUTHORIZED PERSON TO INCORPORATE IN OTHER PROJECTS ANY SPECIAL FEATURES REGULAR OR OTHERWISE SPECIFIED IS STRICTLY PROHIBITED. TENSOLITE, INC. RESERVED BY TENSOLITE COMPANY, LONG BEACH, CALIFORNIA 90815.

NOTES(S):
 1. MATERIAL(S):
 1.1 BODY: 303 SST PER ASTM A-582.
 1.2 CENTER CONDUCTOR: BeCu ALLOY C173 PER ASTM B-196.
 1.3 INSULATOR: PTFE PER ASTM D-1710.
 2. FINISH(ES):
 2.1 BODY:
 (FOR CCSF's) PASSIVATED PER ASTM A-967.
 (FOR CC's) GOLD PLATE PER ASTM B-488 OVER NICKEL PLATE PER AMS-QQ-N-290.
 2.2 CENTER CONDUCTOR: GOLD PLATE PER ASTM B-488 OVER NICKEL PLATE PER AMS-QQ-N-290.
 2.3 INSULATOR: NONE
 3. ELECTRICAL PERFORMANCE:
 3.1 FREQUENCY RANGE: DC-26 GHz
 3.2 R.F. INSERTION LOSS: 0.1 dB MAX TO 26 GHz
 3.3 VSWR: 1:10:1 DC-18 GHz
 1:25:1 18-26 GHz